



**DRIVING TOGETHER** ◀



QINGDAO GRANDSTONE TYRE CO., LTD

**TBR TYRE  
CATALOGUE**

ADD: HISENSE BUILDING 3#B, NO.20 ZHUZHOU ROAD, QINGDAO, CHINA

TEL: 0086-80916215/80916231

E-MAIL: [INFO@GRANDSTONETYRE.COM](mailto:INFO@GRANDSTONETYRE.COM)

WEB: [WWW.GRANDSTONETYRE.COM](http://WWW.GRANDSTONETYRE.COM)

**SINCE 2001**

# COMPANY INTRODUCTION

## - HISTORY

Qingdao Grandstone Tyre Co.,Ltd is a professional and reputable tyre supplier headquartered in Qingdao,China.Grandstone specializes in designing,manufacturing, exporting and premium after sales service since 2001.

## - PRODUCTS 'RANGE CERTIFICATIONS

Grandstone supplies full range of tyres(TBR,PCR,TBB,LTR,OTR,AGR,and Industrial Tyres),wheels and Batteries.Obtained with the certifications of CCC,DOT,ECE,GCC, ISO/TS16949,SONCAP etc.,certified trusted and reliable,Grandstone tyres have been exported to more than 100 countries and regions.

## - STRENGTHS

Proudly owned brands GRANDSTONE JUMBO constantly innovate to make it safer, more efficient and environmentally friendly for users around the world.With the advanced equipments,technology,strict quality control system,efficient production and logistics management,Grandstone promises top-level quality and timely shipment,our aim is to offer VIP clients customized service and efficient solution to improve customer's satisfaction.

## - MISSION

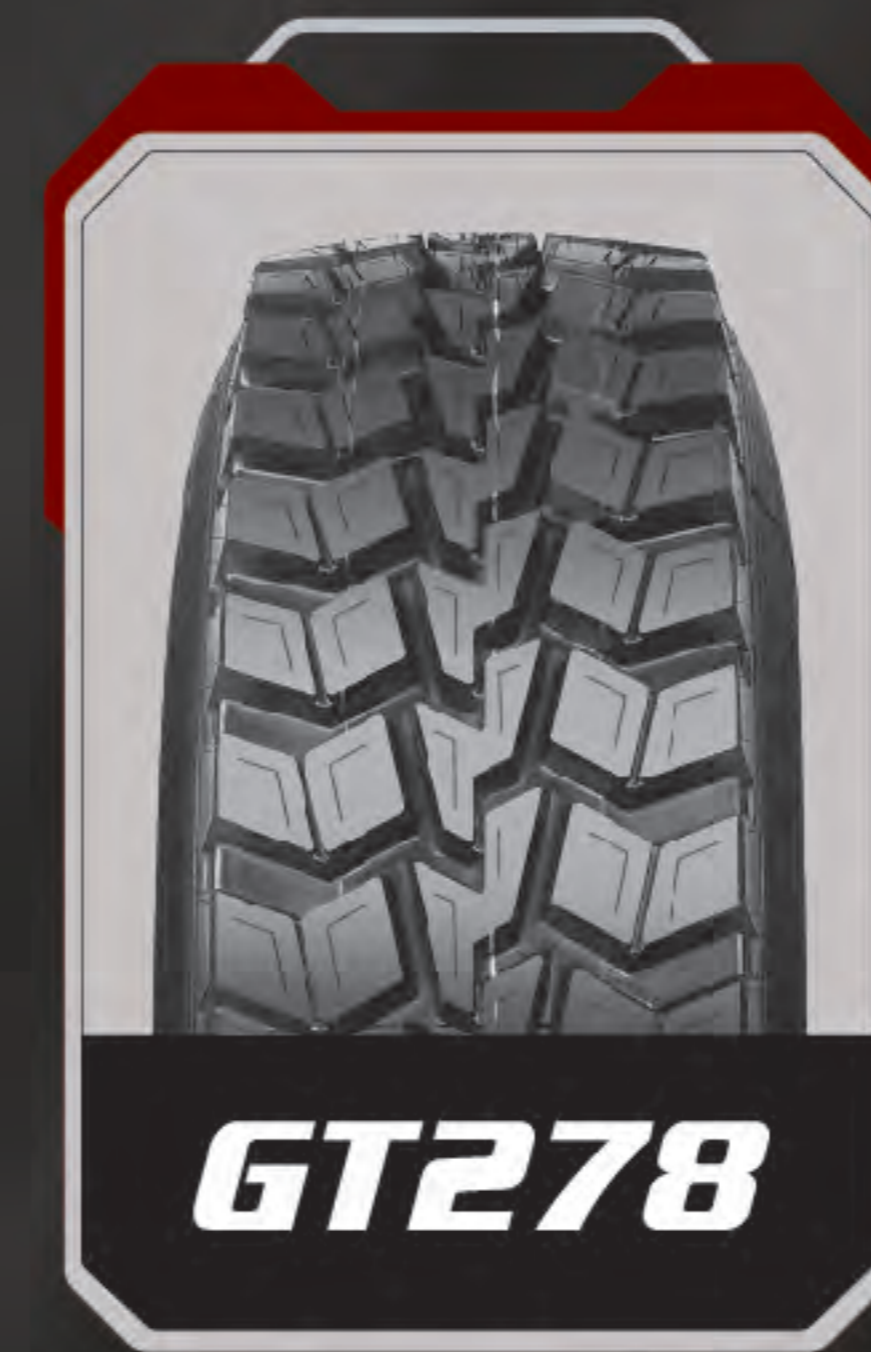
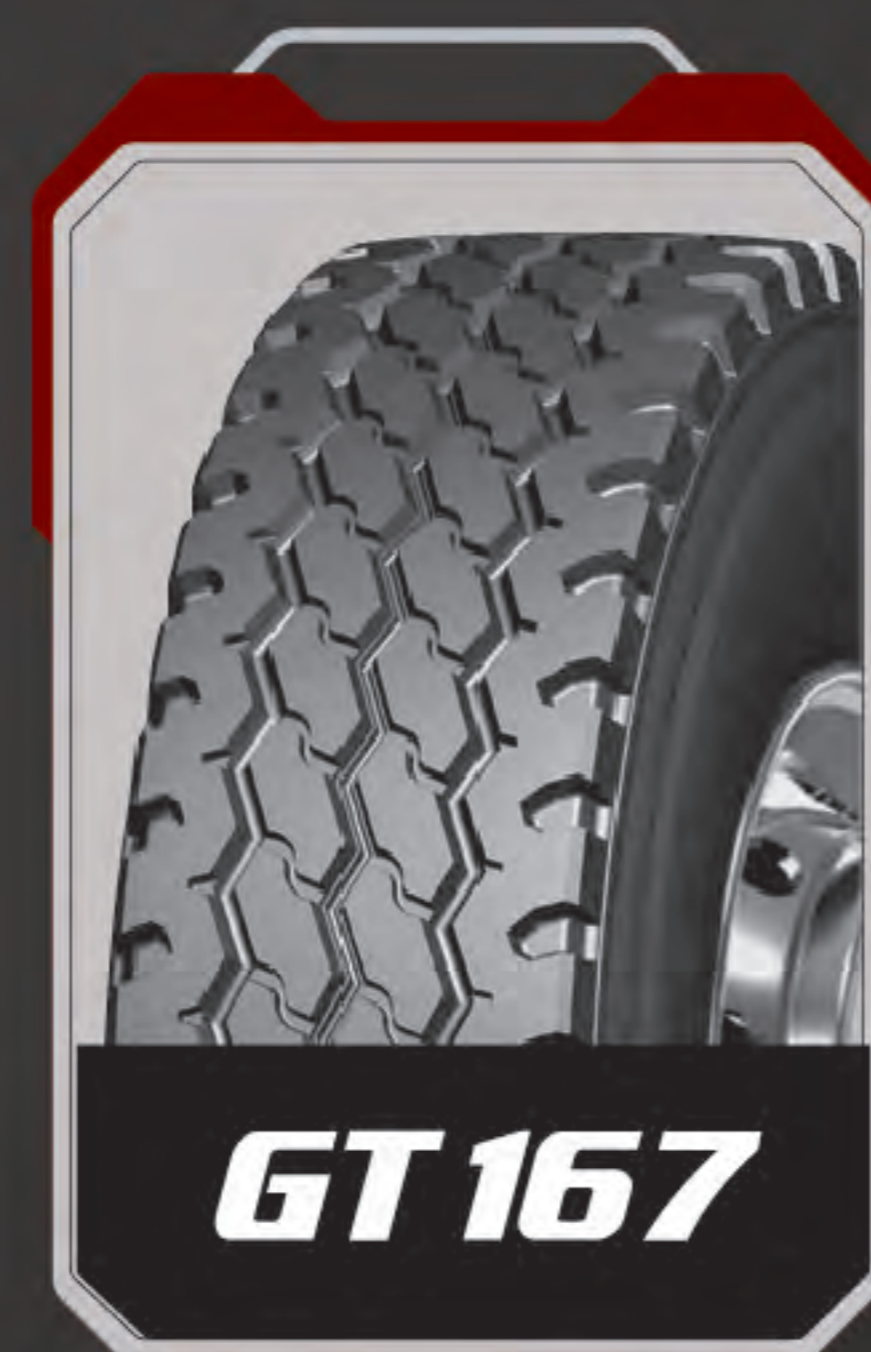
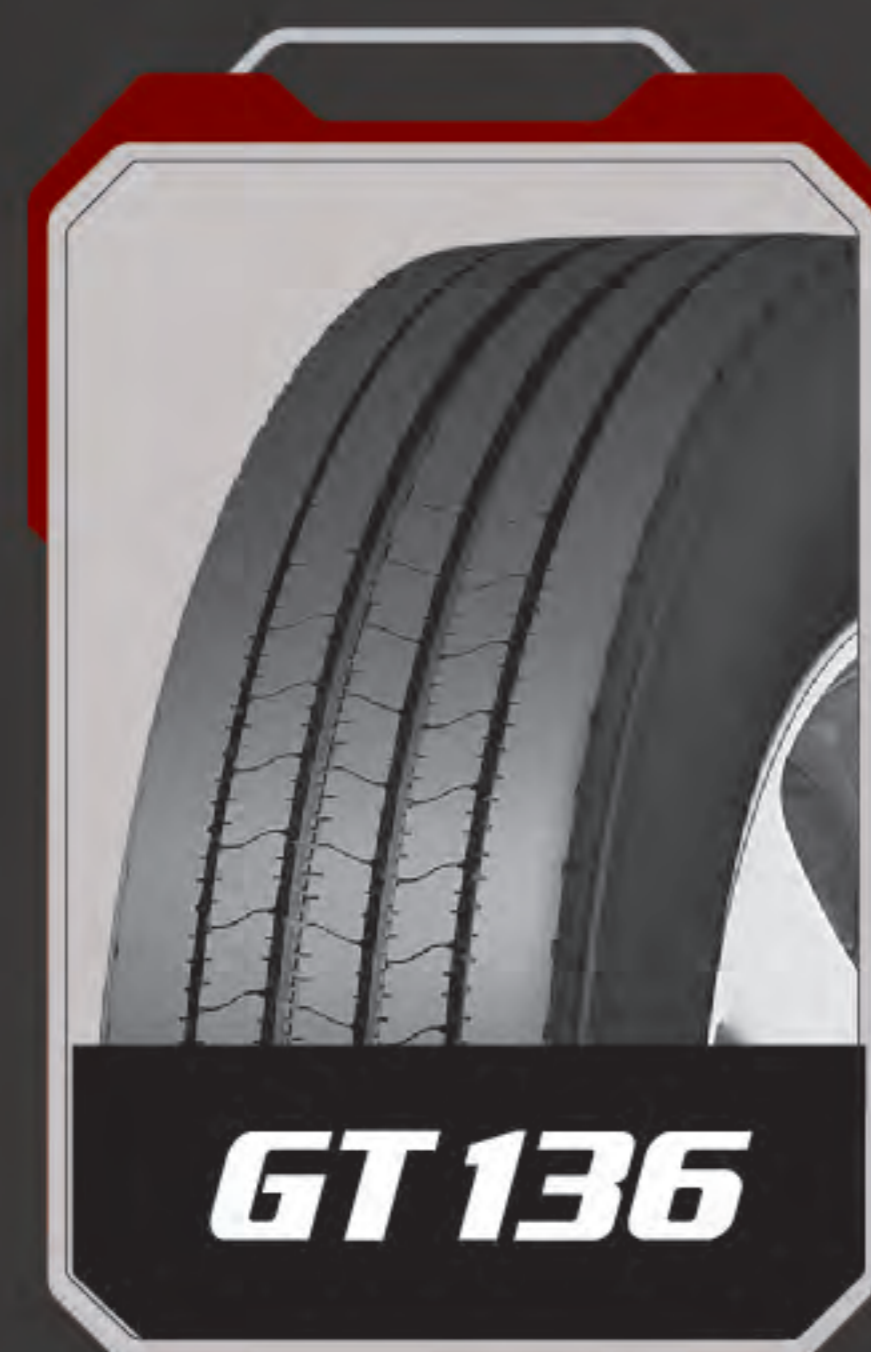
With the values of honesty,responsibility and innovation,Grandstone delicates itself to growing up and creating value with the partners together.

# CONTENTS

TOPIC	PAGE
315/80R22.5	01-02
11R22.5	03-04
11R24.5 295/75R22.5	05-06
295/80R22.5	07-08
385/65R22.5 13R22.5	09-10
315/70R22.5    12R24.5 385/55R22.5    12R22.5	11-12
215/75R17.5 235/75R17.5	13-14
8.5R17.5    225/70R19.5 9.5R17.5    245/70R19.5 215/70R17.5    265/70R19.5	15-16
275/70R22.5    7.00R16 6.50R16    285/70R19.5 7.00R15    8.25R20	17-18
7.50R16 8.25R16	19-20
9.00R20    11.00R20 10.00R20    325/95R24	21-22
12.00R20 12.00R24	23-24

# 315/80R22.5

# 315/80R22.5



## 315/80R22.5

### Technical Information

Pattern	PR	Tread Depth (mm)	Load Index / Speed Rating	Standard Rim	Max. Load Single/Double	Inflation Pressure (kPa)	Overall Diameter (mm)	Section Width (mm)	Position
GT126	20	14.5	156/150 M	9.00	4000 / 3350	850	1076	312	Steer/Trailer
GT136	20	15	156/153 L	9.00	4000 / 3650	850	1076	312	Steer/Trailer
GT178	20	14.5	157/154 L	9.00	4125 / 3750	850	1076	312	Steer/Trailer
GT168	20	15	157/154 K	9.00	4125 / 3750	850	1076	312	All position
GT168 Pro	22	16	167/164 L	9.00	5450 / 5000	950	1076	312	All position
GT167	20	15.5	156/150 M	9.00	4000 / 3350	850	1076	312	All position

## 315/80R22.5

### Technical Information

Pattern	PR	Tread Depth (mm)	Load Index / Speed Rating	Standard Rim	Max. Load Single/Double	Inflation Pressure (kPa)	Overall Diameter (mm)	Section Width (mm)	Position
GT889	20	15	157/154 K	9.00	4125 / 3750	850	1076	312	All position
GT258	20	19.5	157/154 J	9.00	4125 / 3750	850	1076	312	Drive
GT258 Pro	22	19.5	167/164 L	9.00	5450 / 5000	950	1076	312	Drive
GT268+	20	20.5	157/154 L	9.00	4125 / 3750	850	1076	312	Drive
GT278	20	18	156/150 K	9.00	4000 / 3350	850	1076	312	Drive
GT298	20	18	156/150 K	9.00	4000 / 3350	850	1076	312	Drive
GT776	22	22.5	167/161 D	9.00	5450 / 4625	950	1076	312	All position

# 11R22.5

# 11R22.5



## 11R22.5

### Technical Information

Pattern	PR	Tread Depth (mm)	Load Index / Speed Rating	Standard Rim	Max. Load Single/Double	Inflation Pressure (kPa)	Overall Diameter (mm)	Section Width (mm)	Position
GT126	18	13	149/146 M	8.25	3250 / 3000	930	1054	279	Steer/Trailer
GT178	18	14.5	149/146 M	8.25	3250 / 3000	930	1054	279	Steer/Trailer
GT178+	18	15	149/146 L	8.25	3250 / 3000	930	1054	279	Steer/Trailer
GT178+ NEW	18	14.5	149/146 L	8.25	3250 / 3000	930	1054	279	Steer/Trailer
GT198	18	14.5	149/146 M	8.25	3250 / 3000	930	1054	279	Steer/Trailer
GT168	18	14.5	149/146 L	8.25	3250 / 3000	930	1054	279	All Position
GT889	18	14.5	149/146 L	8.25	3250 / 3000	930	1054	279	All Position

## 11R22.5

### Technical Information

Pattern	PR	Tread Depth (mm)	Load Index / Speed Rating	Standard Rim	Max. Load Single/Double	Inflation Pressure (kPa)	Overall Diameter (mm)	Section Width (mm)	Position
GT238	18	20	149/146 M	8.25	3250 / 3000	930	1054	279	Drive
GT276	18	20	149/146 M	8.25	3250 / 3000	930	1054	279	Drive
GT286+ NEW	18	19.5	149/146 L	8.25	3250 / 3000	930	1054	279	Drive
GT258	18	20	149/146 M	8.25	3250 / 3000	930	1054	279	Drive
GT266	18	20	149/146 G	8.25	3250 / 3000	930	1054	279	All Position
GT268+	18	19	149/146 L	8.25	3250 / 3000	930	1054	279	Drive
GT278+	18	19	149/146 L	8.25	3250 / 3000	930	1054	279	Drive

# 11R24.5

# 295/75R22.5



## 11R24.5

### Technical Information

Pattern	PR	Tread Depth (mm)	Load Index / Speed Rating	Standard Rim	Max. Load Single/Double	Inflation Pressure (kPa)	Overall Diameter (mm)	Section Width (mm)	Position
GT178	18	14.5	152/149 M	8.25	3550 / 3250	930	1104	279	Steer/Trailer
GT178+ NEW	18	14.5	152/149 L	8.25	3550 / 3250	930	1104	279	Steer/Trailer
GT198	18	14.5	152/149 M	8.25	3550 / 3250	930	1104	279	Steer/Trailer
GT168	18	16.5	152/149 L	8.25	3550 / 3250	930	1104	279	Steer/Trailer
GT238	18	20	152/149 M	8.25	3550 / 3250	930	1104	279	Drive
GT276	18	20	152/149 M	8.25	3550 / 3250	930	1104	279	Drive
GT286+ NEW	18	19.5	152/149 L	8.25	3550 / 3250	930	1104	279	Drive
GT266	18	20	152/149 G	8.25	3550 / 3250	930	1104	279	All Position

## 295/75R22.5

### Technical Information

Pattern	PR	Tread Depth (mm)	Load Index / Speed Rating	Standard Rim	Max. Load Single/Double	Inflation Pressure (kPa)	Overall Diameter (mm)	Section Width (mm)	Position
GT178	18	14.5	149/146 M	9.00	3250 / 3000	930	1014	298	Steer/Trailer
GT238	18	20	149/146 M	9.00	3250 / 3000	930	1014	298	Drive
GT178+ NEW	18	16	149/146 L	9.00	3250 / 3000	930	1014	298	Steer/Trailer
GT286+ NEW	18	23	149/146 L	9.00	3250 / 3000	930	1014	298	Drive

# 295/80R22.5

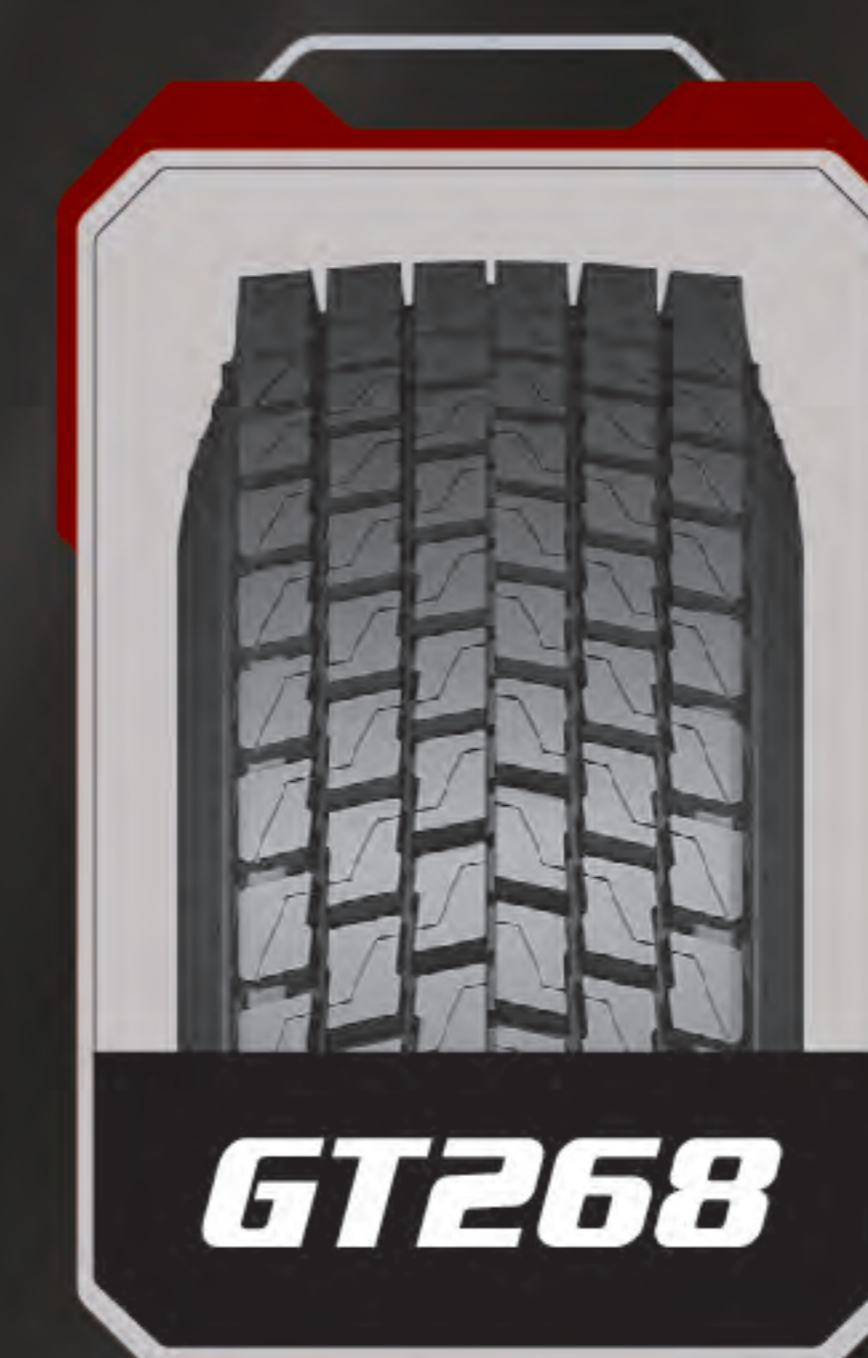
# 295/80R22.5



EXTRA TREAD WIDTH



EXTRA TREAD WIDTH



EXTRA TREAD WIDTH



EXTRA TREAD WIDTH

## 295/80R22.5

### Technical Information

Pattern	PR	Tread Depth (mm)	Load Index / Speed Rating	Standard Rim	Max. Load Single/Double	Inflation Pressure (kPa)	Overall Diameter (mm)	Section Width (mm)	Position
GT178	18	15.5	152/149 M	9.00	3550 / 3250	900	1045	298	Steer/Trailer
GT198+	18	15.5	152/149 M	9.00	3550 / 3250	900	1045	298	Steer/Trailer
SUPER GT198	18	17	152/149 M	9.00	3550 / 3250	900	1045	298	Steer/Trailer
GT168	18	14.5	152/149 K	9.00	3550 / 3250	900	1045	298	All position
GT889	18	20	152/149 J	9.00	3550 / 3250	900	1045	298	All position
GT258	18	18.5	152/149 J	9.00	3550 / 3250	900	1045	298	Drive

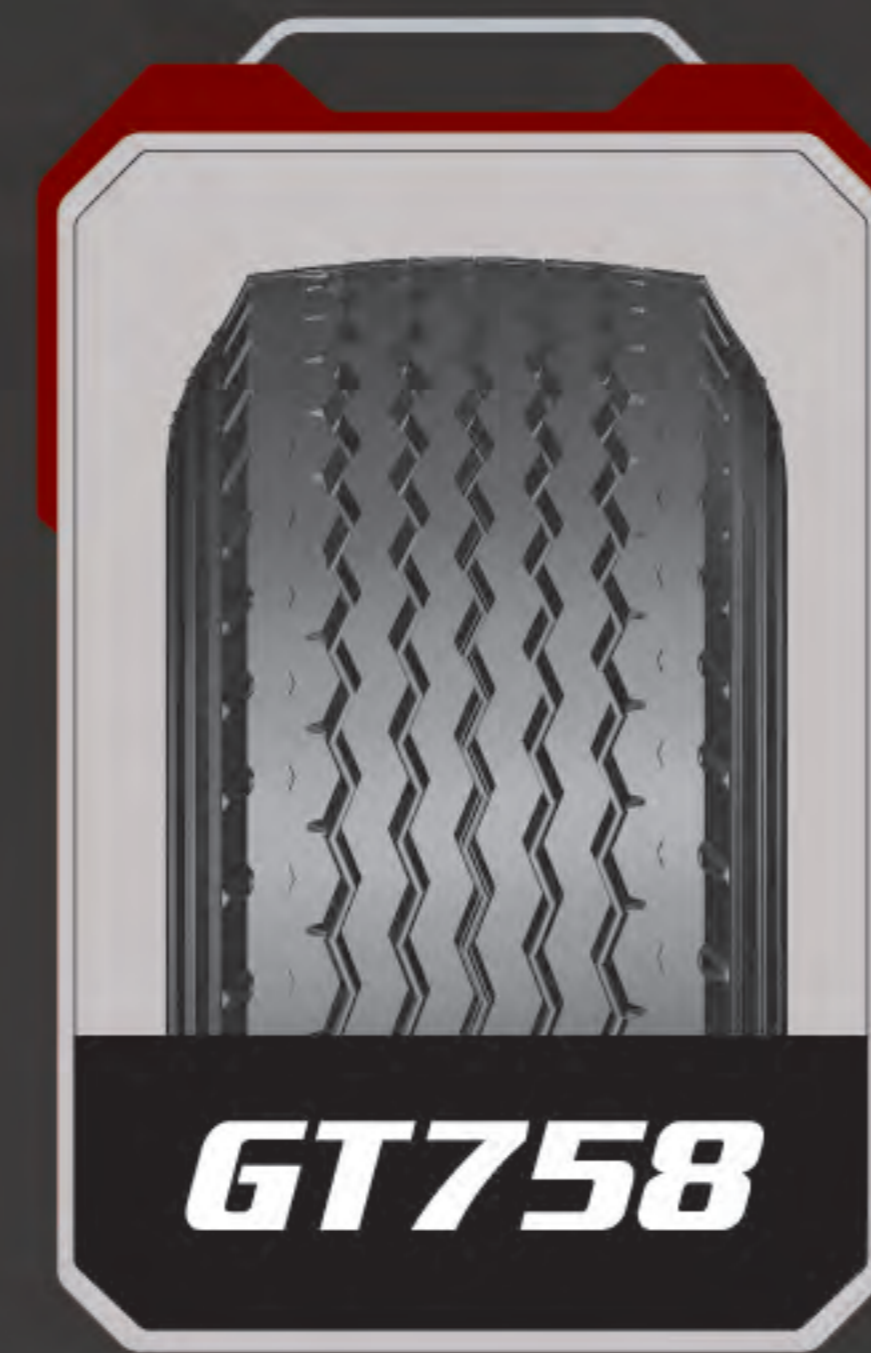
## 295/80R22.5

### Technical Information

Pattern	PR	Tread Depth (mm)	Load Index / Speed Rating	Standard Rim	Max. Load Single/Double	Inflation Pressure (kPa)	Overall Diameter (mm)	Section Width (mm)	Position
SUPER GT258	18	18.5	152/149 J	9.00	3550 / 3250	900	1045	298	Drive
GT268	18	20.5	152/149 K	9.00	3550 / 3250	900	1045	298	Drive
SUPER GT268	18	20.5	152/149 M	9.00	3550 / 3250	900	1045	298	Drive
GT266	18	22	152/149 F	9.00	3550 / 3250	900	1045	298	All position
SUPER GT266	18	22	152/149 F	9.00	3550 / 3250	900	1045	298	All position

# 385/65R22.5

# 13R22.5



## 385/65R22.5

### Technical Information

Pattern	PR	Tread Depth (mm)	Load Index / Speed Rating	Standard Rim	Max. Load Single/Double	Inflation Pressure (kPa)	Overall Diameter (mm)	Section Width (mm)	Position
GT126	20	16	160 L	11.75	4500 / -	900	1073	389	Trailer
GT178	20	16	160 L	11.75	4500 / -	900	1073	389	Trailer
GT758	20	16	160 L	11.75	4500 / -	900	1073	389	Trailer
GT768	20	16	160 L	11.75	4500 / -	900	1073	389	Trailer
GT778	20	16	160 L	11.75	4500 / -	900	1073	389	Trailer
GT798	20	16	160 L	11.75	4500 / -	900	1073	389	Trailer

## 13R22.5

### Technical Information

Pattern	PR	Tread Depth (mm)	Load Index / Speed Rating	Standard Rim	Max. Load Single/Double	Inflation Pressure (kPa)	Overall Diameter (mm)	Section Width (mm)	Position
GT168	20	15	156/153 K	9.75	4000 / 3650	960	1120	308	All position
GT258	20	19	156/153 K	9.00	4000 / 3650	960	1120	308	Drive
GT266	20	19.5	156/153 F	9.75	4000 / 3650	960	1120	308	All position

## 315/70R22.5



**GT178**



**GT268**

## 12R22.5



**GT168**



**GT258**



**GT268+**

## 385/55R22.5



**GT178**

## 12R24.5



**GT168**



**GT126**



**GT136**

### 315/70R22.5

#### Technical Information

Pattern	PR	Tread Depth (mm)	Load Index / Speed Rating	Standard Rim	Max. Load Single/Double	Inflation Pressure (kPa)	Overall Diameter (mm)	Section Width (mm)	Position
GT178	20	15	154/150 M	9.00	3750 / 3350	900	1014	312	Steer/Trailer
GT268	20	20	154/150 L	9.00	3750 / 3350	900	1020	312	Drive

### 385/55R22.5

Pattern	PR	Tread Depth (mm)	Load Index / Speed Rating	Standard Rim	Max. Load Single/Double	Inflation Pressure (kPa)	Overall Diameter (mm)	Section Width (mm)	Position
GT178	20	15.5	160 L	12.25	4500 / -	900	996	386	Steer/Trailer

### 12R24.5

Pattern	PR	Tread Depth (mm)	Load Index / Speed Rating	Standard Rim	Max. Load Single/Double	Inflation Pressure (kPa)	Overall Diameter (mm)	Section Width (mm)	Position
GT168	20	16.5	156/153 M	9.00	4000 / 3650	930	1145	297	All position

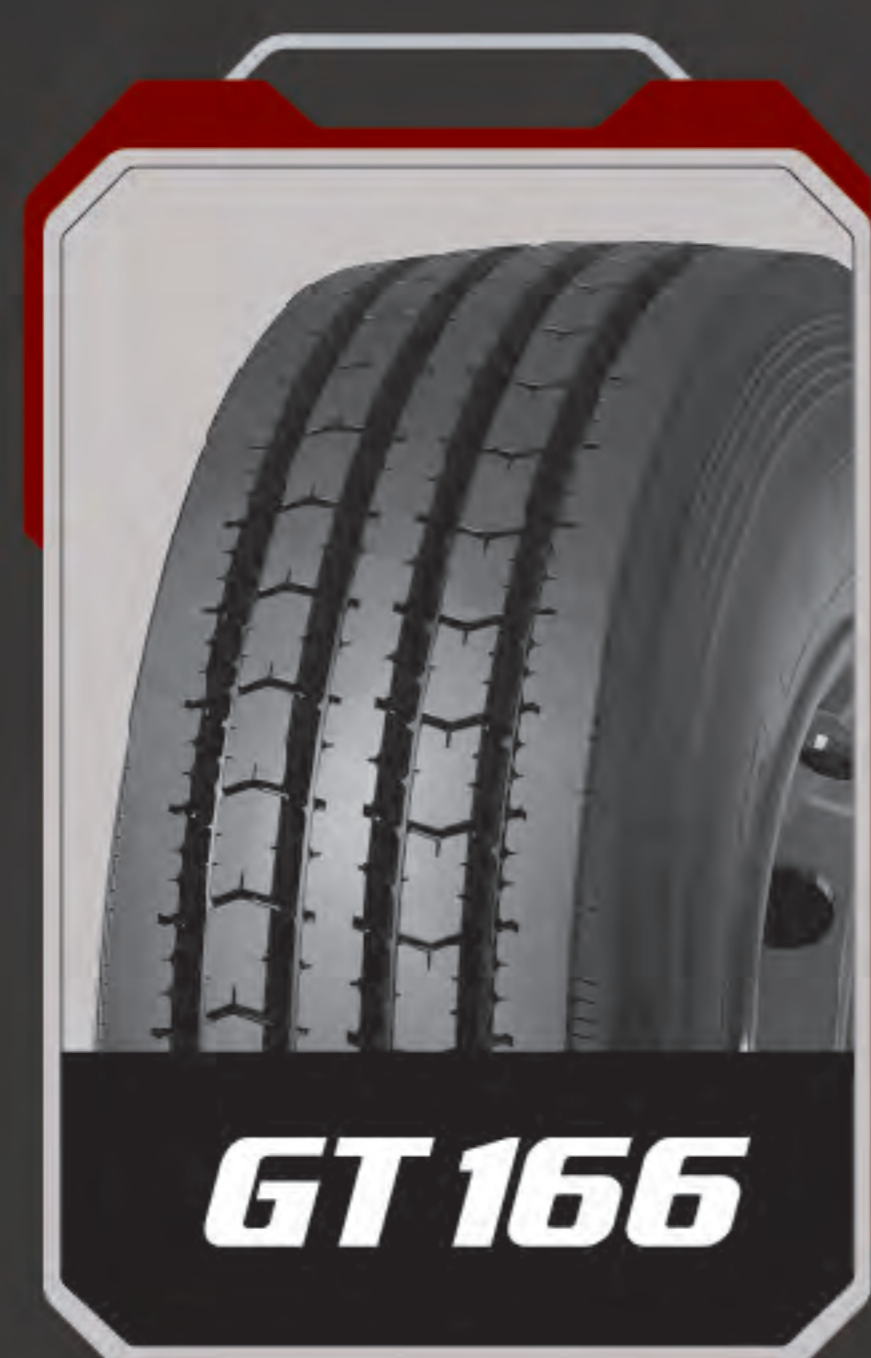
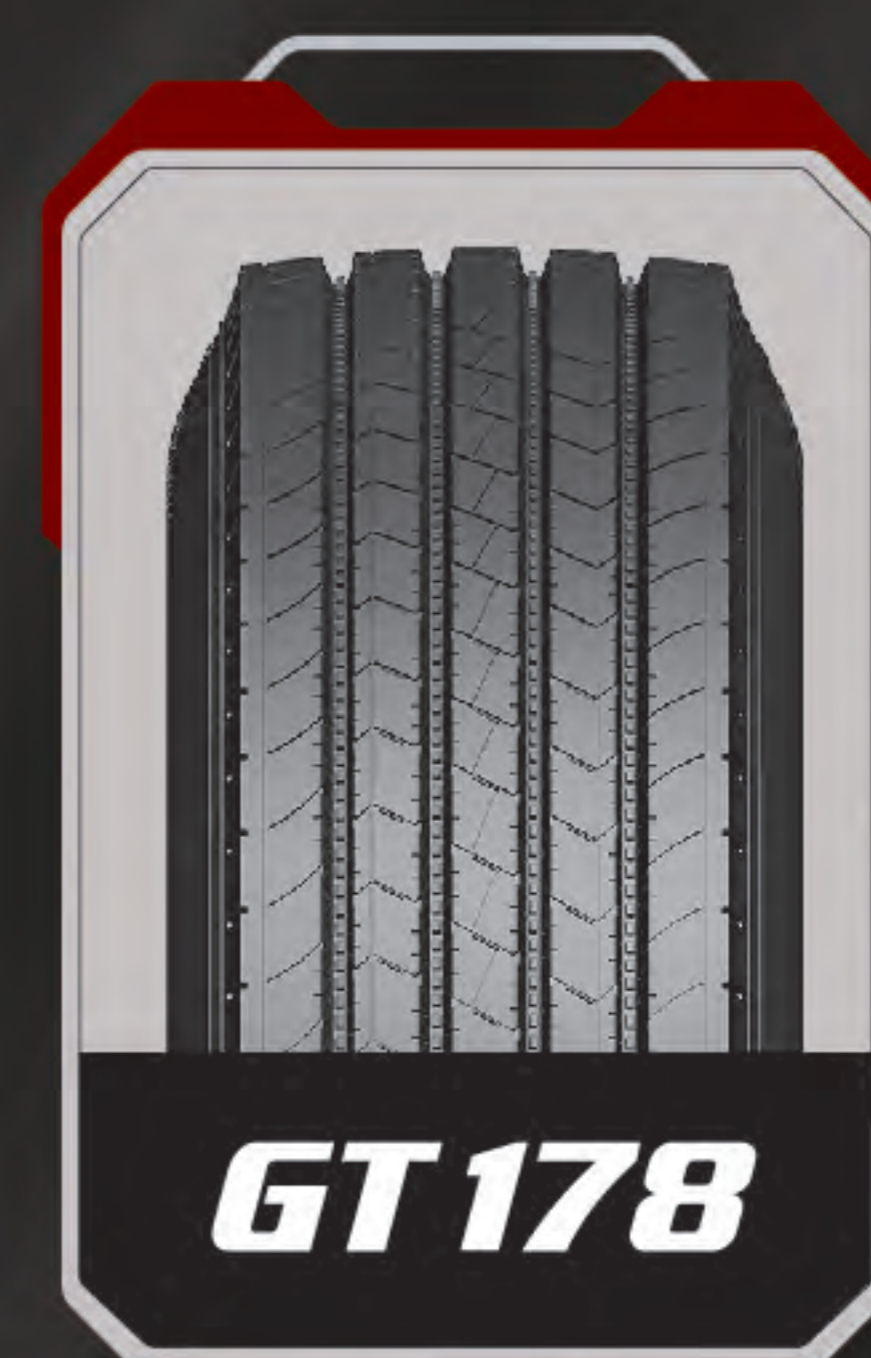
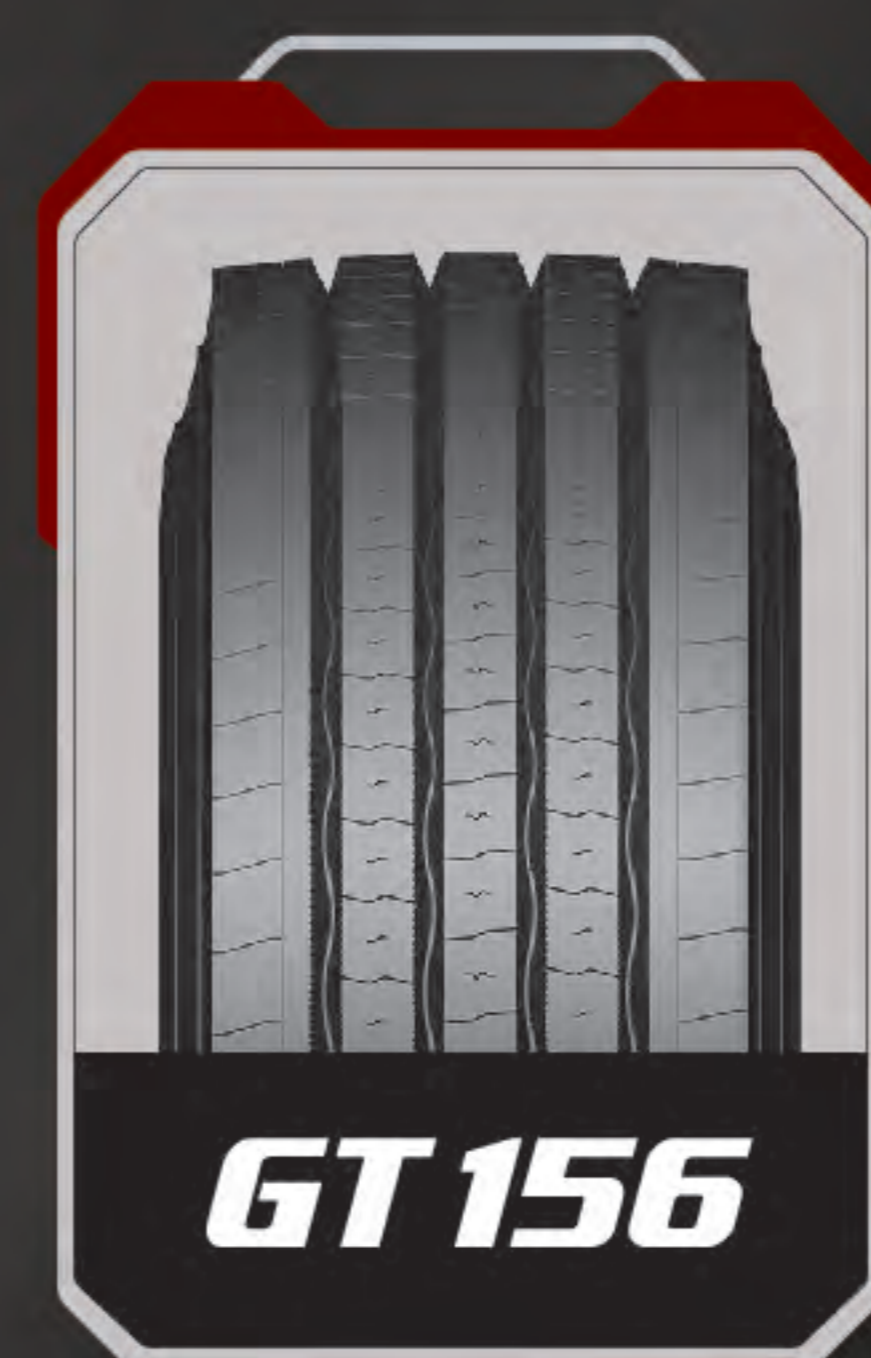
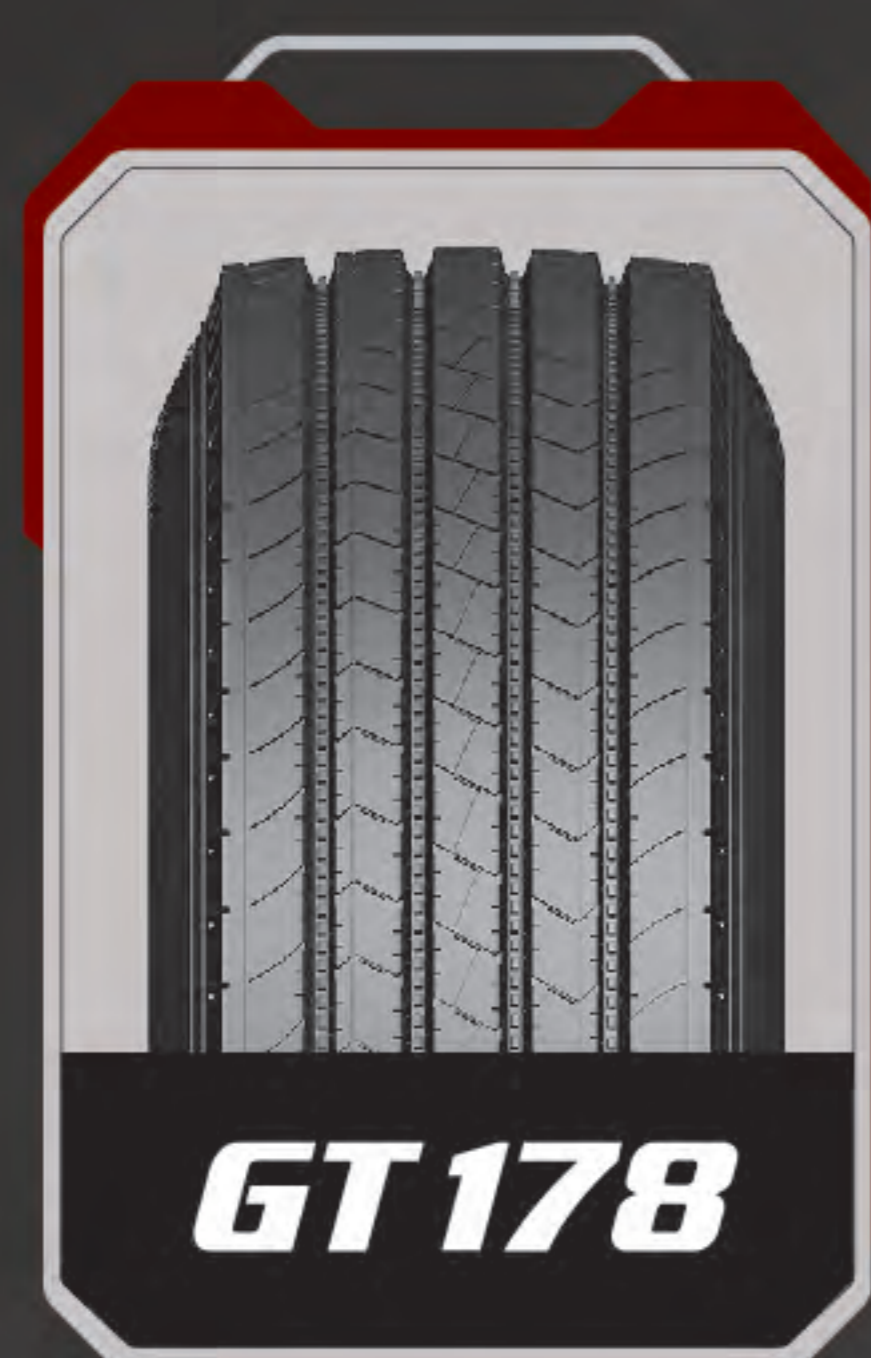
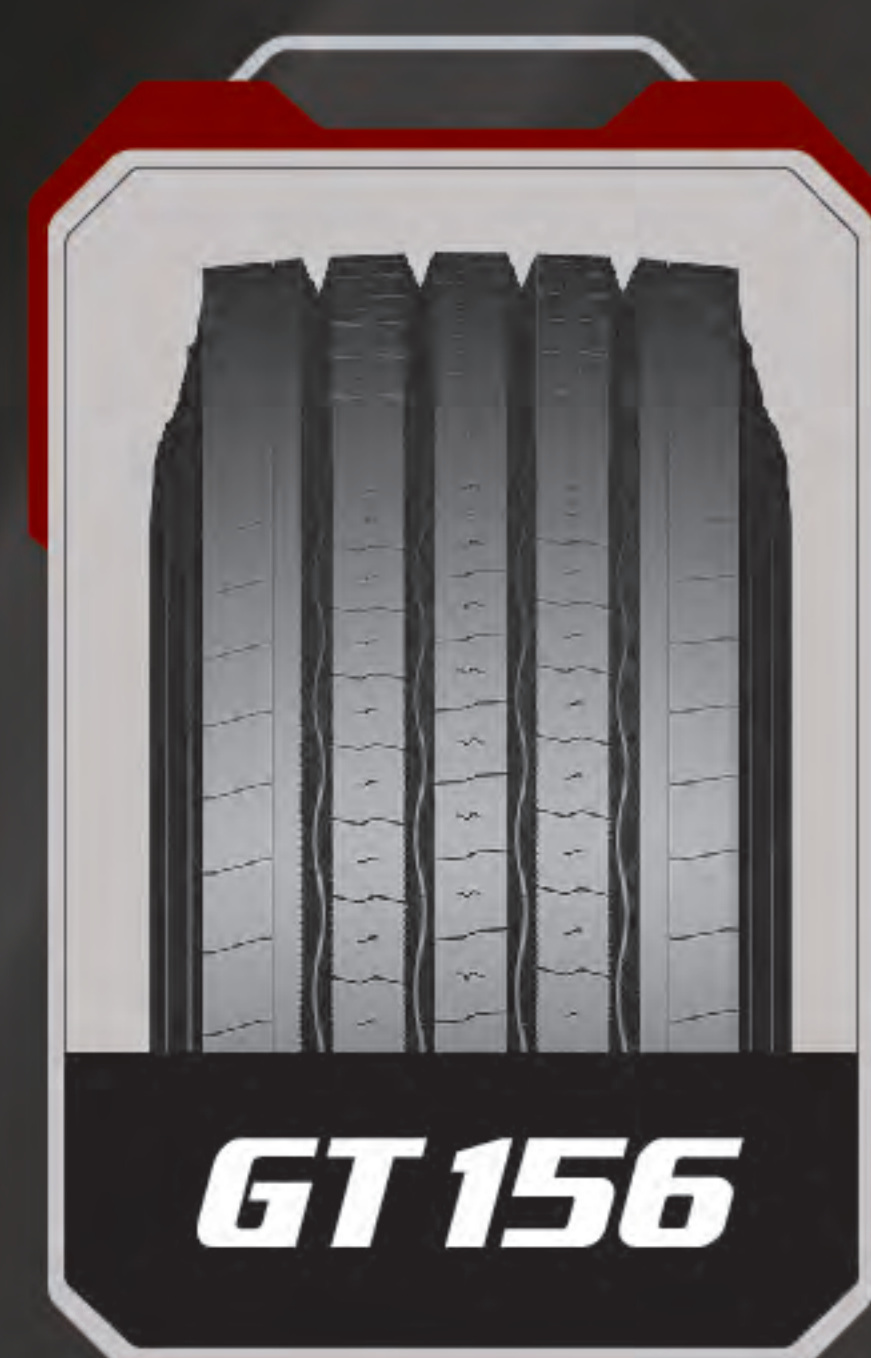
### 12R22.5

#### Technical Information

Pattern	PR	Tread Depth (mm)	Load Index / Speed Rating	Standard Rim	Max. Load Single/Double	Inflation Pressure (kPa)	Overall Diameter (mm)	Section Width (mm)	Position
GT126	18	14.5	152/149 M	9.00	3550 / 3250	930	1085	300	Steer/Trailer
GT136	18	14.5	152/149 L	9.00	3550 / 3250	930	1085	300	Steer/Trailer
GT168	18	14.5	152/149 M	9.00	3550 / 3250	930	1085	300	All position
GT258	18	20	152/149 K	9.00	3550 / 3250	930	1085	300	Drive
GT268+	18	20	152/149 K	9.00	3550 / 3250	930	1085	300	Drive

# 215/75R17.5

# 235/75R17.5



## 215/75R17.5

### Technical Information

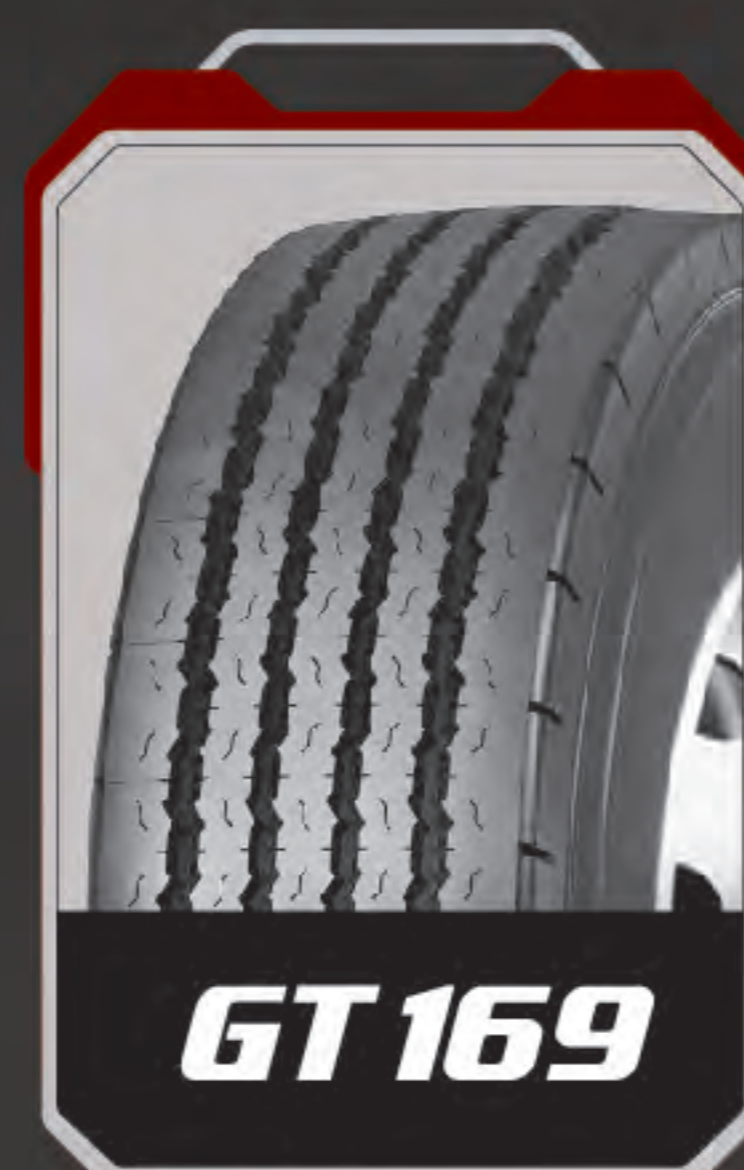
Pattern	PR	Tread Depth (mm)	Load Index / Speed Rating	Standard Rim	Max. Load Single/Double	Inflation Pressure (kPa)	Overall Diameter (mm)	Section Width (mm)	Position
GT156	16	13	127/124 M	6.00	1750 / 1600	830	767	211	All position
	18	13	135/133 L	6.00	2180 / 2060	850	767	211	All position
GT166	16	11.5	127/124 M	6.00	1750 / 1600	830	767	211	All position
GT178	18	12	135/133 J	6.00	2180 / 2060	850	767	211	All position
GT268	18	15	135/133 J	6.00	2180 / 2060	850	767	211	All position
GT266	16	15.5	127/124 K	6.00	1750 / 1600	830	767	211	All position
	18	15.5	135/133 J	6.00	2180 / 2060	850	767	211	All position

## 235/75R17.5

### Technical Information

Pattern	PR	Tread Depth (mm)	Load Index / Speed Rating	Standard Rim	Max. Load Single/Double	Inflation Pressure (kPa)	Overall Diameter (mm)	Section Width (mm)	Position
GT156	16	13	132/129 M	6.75	2000 / 1850	830	797	233	All position
	18	13	143/141 L	6.75	2725 / 2575	850	797	233	All position
GT166	16	11.5	132/129 M	9.75	2000 / 1850	830	797	233	All position
GT178	18	12.5	143/141 J	6.75	2725 / 2575	850	797	233	All position
GT268	18	15	143/141 J	6.75	2725 / 2575	850	797	233	All position
GT266	16	15.5	132/129 K	6.75	2000 / 1850	830	797	233	All position
	18	15.5	143/141 J	6.75	2725 / 2575	850	797	233	All position

## 9.5R 17.5



## 225/70R 19.5



## 8.5R 17.5

## 215/70R 17.5

## 245/70R 19.5

## 265/70R 19.5



### 8.5R 17.5

#### Technical Information

Pattern	PR	Tread Depth (mm)	Load Index / Speed Rating	Standard Rim	Max. Load Single/Double	Inflation Pressure (kPa)	Overall Diameter (mm)	Section Width (mm)	Position
GT989	16	11	123/124 M	6.00	3750 / 3525	800	802	215	All position

### 9.5R 17.5

Pattern	PR	Tread Depth (mm)	Load Index / Speed Rating	Standard Rim	Max. Load Single/Double	Inflation Pressure (kPa)	Overall Diameter (mm)	Section Width (mm)	Position
GT169	18	12	143/141 M	6.75	2725 / 2575	860	842	240	All position
GT136	18	12.5	143/141 J	6.75	2725 / 2575	860	842	240	All position

### 215/70R 17.5

Pattern	PR	Tread Depth (mm)	Load Index / Speed Rating	Standard Rim	Max. Load Single/Double	Inflation Pressure (kPa)	Overall Diameter (mm)	Section Width (mm)	Position
GT180	14	11	123/121 L	6.00	1550 / 1450	760	747	211	All position

### 225/70R 19.5

#### Technical Information

Pattern	PR	Tread Depth (mm)	Load Index / Speed Rating	Standard Rim	Max. Load Single/Double	Inflation Pressure (kPa)	Overall Diameter (mm)	Section Width (mm)	Position
GT178	16	12.5	128/126 M	6.75	1800 / 1700	760	811	226	All position
GT268	16	15.5	128/126 M	6.75	1800 / 1700	760	811	226	All position

### 245/70R 19.5

Pattern	PR	Tread Depth (mm)	Load Index / Speed Rating	Standard Rim	Max. Load Single/Double	Inflation Pressure (kPa)	Overall Diameter (mm)	Section Width (mm)	Position
GT178	16	12.5	143/141 J	7.5	2725 / 2575	850	838	245	All position
GT268	16	15.5	143/141 J	7.5	2725 / 2575	850	838	245	All position

### 265/70R 19.5

Pattern	PR	Tread Depth (mm)	Load Index / Speed Rating	Standard Rim	Max. Load Single/Double	Inflation Pressure (kPa)	Overall Diameter (mm)	Section Width (mm)	Position
GT178	16	12.5	140/138 M	7.5	2500 / 2360	830	862	260	All position
	18	12.5	143/141 J	7.5	2725 / 2575	850	862	260	All position
GT268	16	15.5	140/138 M	7.5	2500 / 2360	830	868	260	All position
	18	15.5	143/141 J	7.5	2725 / 2575	850	868	260	All position

## 275/70R22.5



**GT178**

## 285/70R19.5



**GT178**



**GT268**

## 6.50R16



**GT168**

## 7.00R15



**GT160**

## 7.00R16



**GT168**

## 8.25R20



**GT228**

### 275/70R22.5

#### Technical Information

Pattern	PR	Tread Depth (mm)	Load Index / Speed Rating	Standard Rim	Max. Load Single/Double	Inflation Pressure (kPa)	Overall Diameter (mm)	Section Width (mm)	Position
GT178	18	14.5	152/148 J	8.25	3550 / 3150	900	952	216	Steer/Trailer

### 6.50R16

Pattern	PR	Tread Depth (mm)	Load Index / Speed Rating	Standard Rim	Max. Load Single/Double	Inflation Pressure (kPa)	Overall Diameter (mm)	Section Width (mm)	Position
GT168	12	10	110/105 L	5.50F	1060 / 925	670	750	185	All position

### 7.00R15

Pattern	PR	Tread Depth (mm)	Load Index / Speed Rating	Standard Rim	Max. Load Single/Double	Inflation Pressure (kPa)	Overall Diameter (mm)	Section Width (mm)	Position
GT160	12	12	117/115 J	5.50F	1285 / 1215	770	750	200	All position

### 285/70R19.5

#### Technical Information

Pattern	PR	Tread Depth (mm)	Load Index / Speed Rating	Standard Rim	Max. Load Single/Double	Inflation Pressure (kPa)	Overall Diameter (mm)	Section Width (mm)	Position
GT178	18	13	150/148 J	8.25	3350 / 3150	900	886	283	Steer/Trailer
GT268	18	16	150/148 J	8.25	3350 / 3150	900	892	283	Drive

### 7.00R16

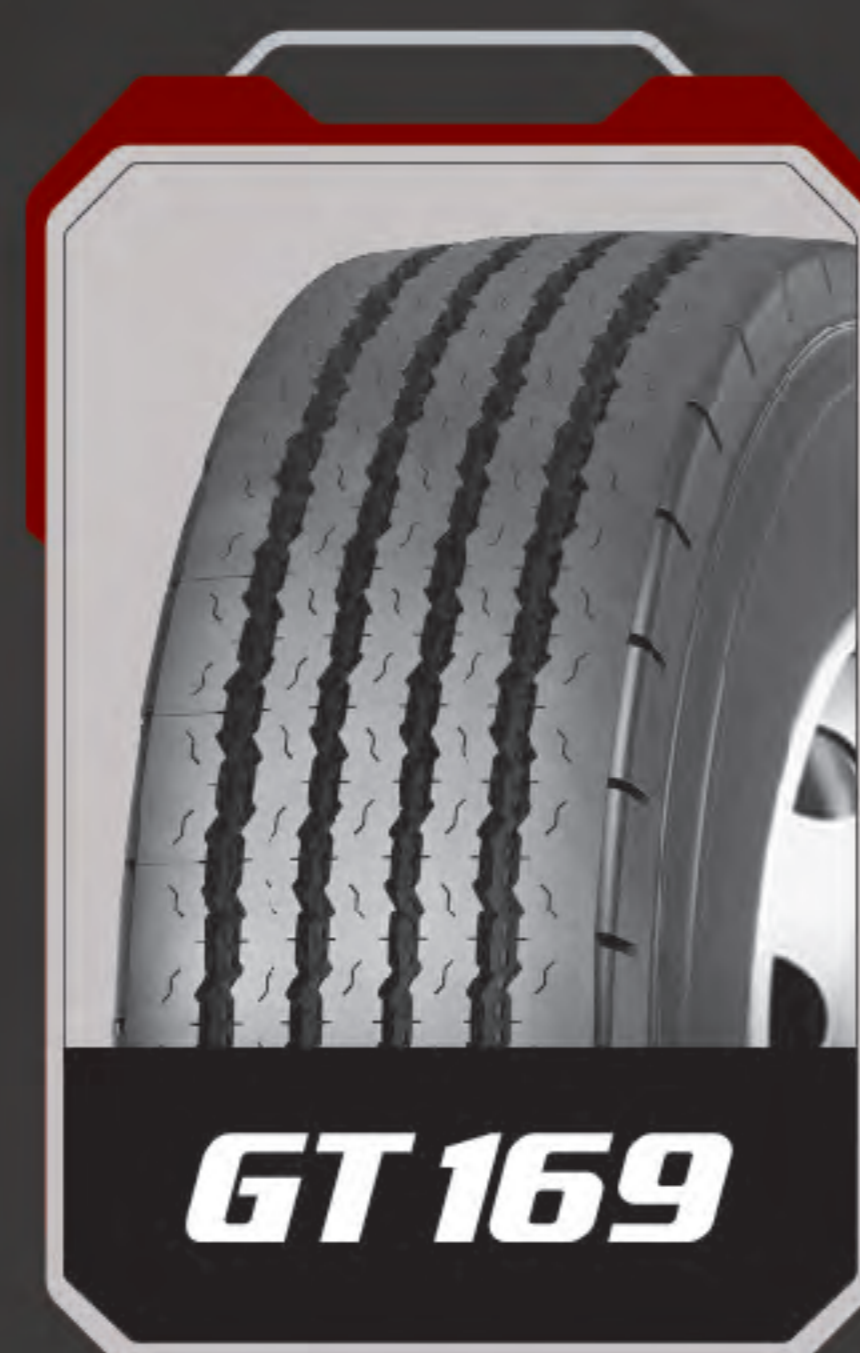
Pattern	PR	Tread Depth (mm)	Load Index / Speed Rating	Standard Rim	Max. Load Single/Double	Inflation Pressure (kPa)	Overall Diameter (mm)	Section Width (mm)	Position
GT168	14	11	118/114 L	5.50F	1320 / 1180	770	775	200	All position

### 8.25R20

Pattern	PR	Tread Depth (mm)	Load Index / Speed Rating	Standard Rim	Max. Load Single/Double	Inflation Pressure (kPa)	Overall Diameter (mm)	Section Width (mm)	Position
GT228	16	16	139/137 J	6.50	2430 / 2300	930	974	236	All position

# 7.50R 16

# 8.25R 16



## 7.50R 16

### Technical Information

Pattern	PR	Tread Depth (mm)	Load Index / Speed Rating	Standard Rim	Max. Load Single/Double	Inflation Pressure (kPa)	Overall Diameter (mm)	Section Width (mm)	Position
GT161	16	11.5	125/121 L	6.00G	1600 / 1400	770	802	210	All position
GT169	16	12	125/121 L	6.00G	1650 / 1450	870	805	215	All position
GT168	16	11.5	124/120 L	6.00G	1600 / 1400	770	802	210	All position
GT228	16	15	125/121 L	6.00G	1600 / 1400	770	802	210	All position

## 8.25R 16

### Technical Information

Pattern	PR	Tread Depth (mm)	Load Index / Speed Rating	Standard Rim	Max. Load Single/Double	Inflation Pressure (kPa)	Overall Diameter (mm)	Section Width (mm)	Position
GT169	16	13.5	128/124 L	6.50H	1800 / 1600	770	855	235	All position
GT168	16	11.5	128/124 K	6.50H	1800 / 1600	770	855	235	All position
GT228	16	15.5	128/124 K	6.50H	1800 / 1600	770	855	235	All position

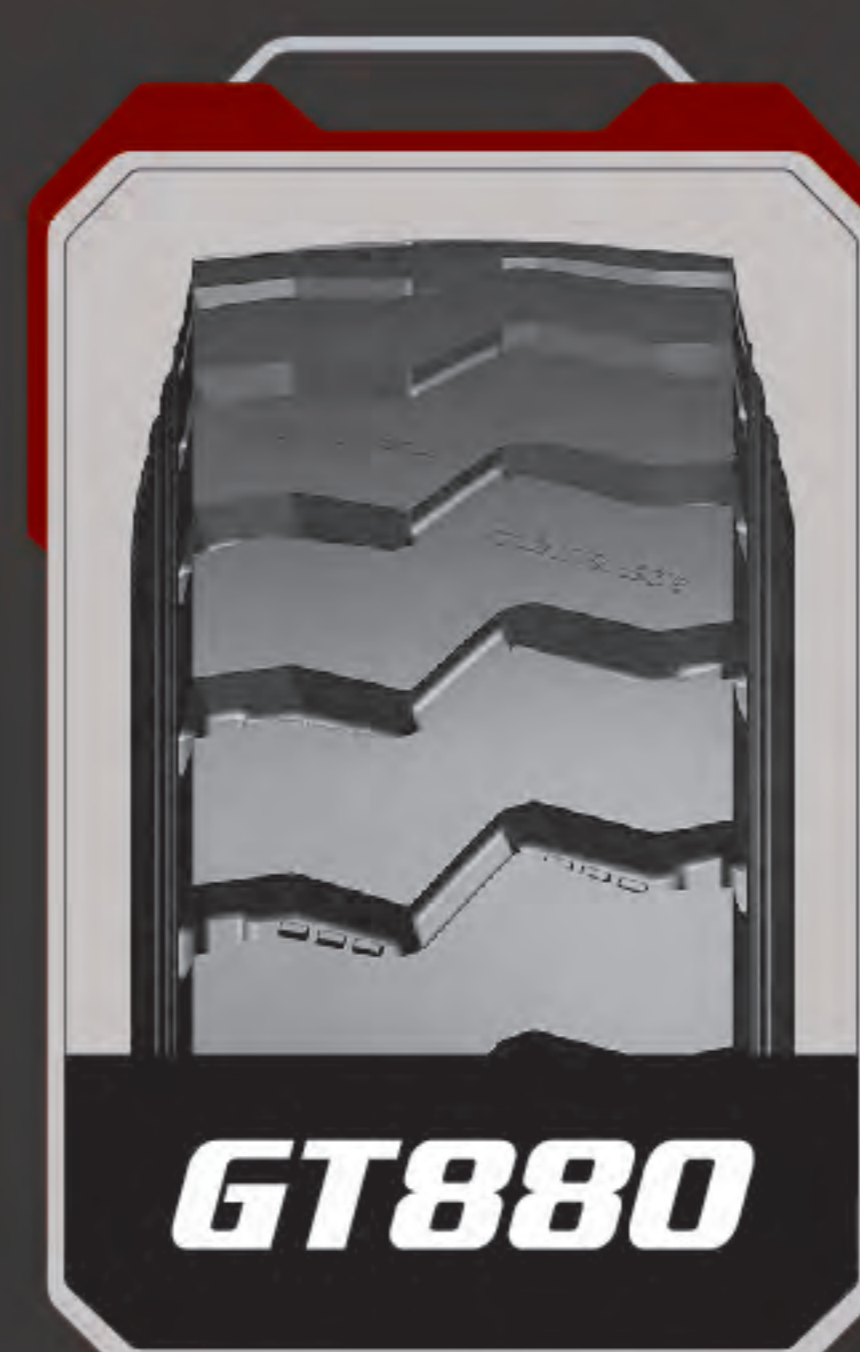
# 9.00R20



# 11.00R20



# 10.00R20



# 325/95R24



## 9.00R20

### Technical Information

Pattern	PR	Tread Depth (mm)	Load Index / Speed Rating	Standard Rim	Max. Load Single/Double	Inflation Pressure (kPa)	Overall Diameter (mm)	Section Width (mm)	Position
GT168	16	15.5	144/142 K	7.00	2800 / 2650	900	1018	260	All position

## 10.00R20

Pattern	PR	Tread Depth (mm)	Load Index / Speed Rating	Standard Rim	Max. Load Single/Double	Inflation Pressure (kPa)	Overall Diameter (mm)	Section Width (mm)	Position
GT168	18	16.5	149/146 K	7.50	3250 / 3000	930	1051	278	All position
GT880	18	25	149/146 G	7.50	3250 / 3000	930	1058	278	All position

## 11.00R20

### Technical Information

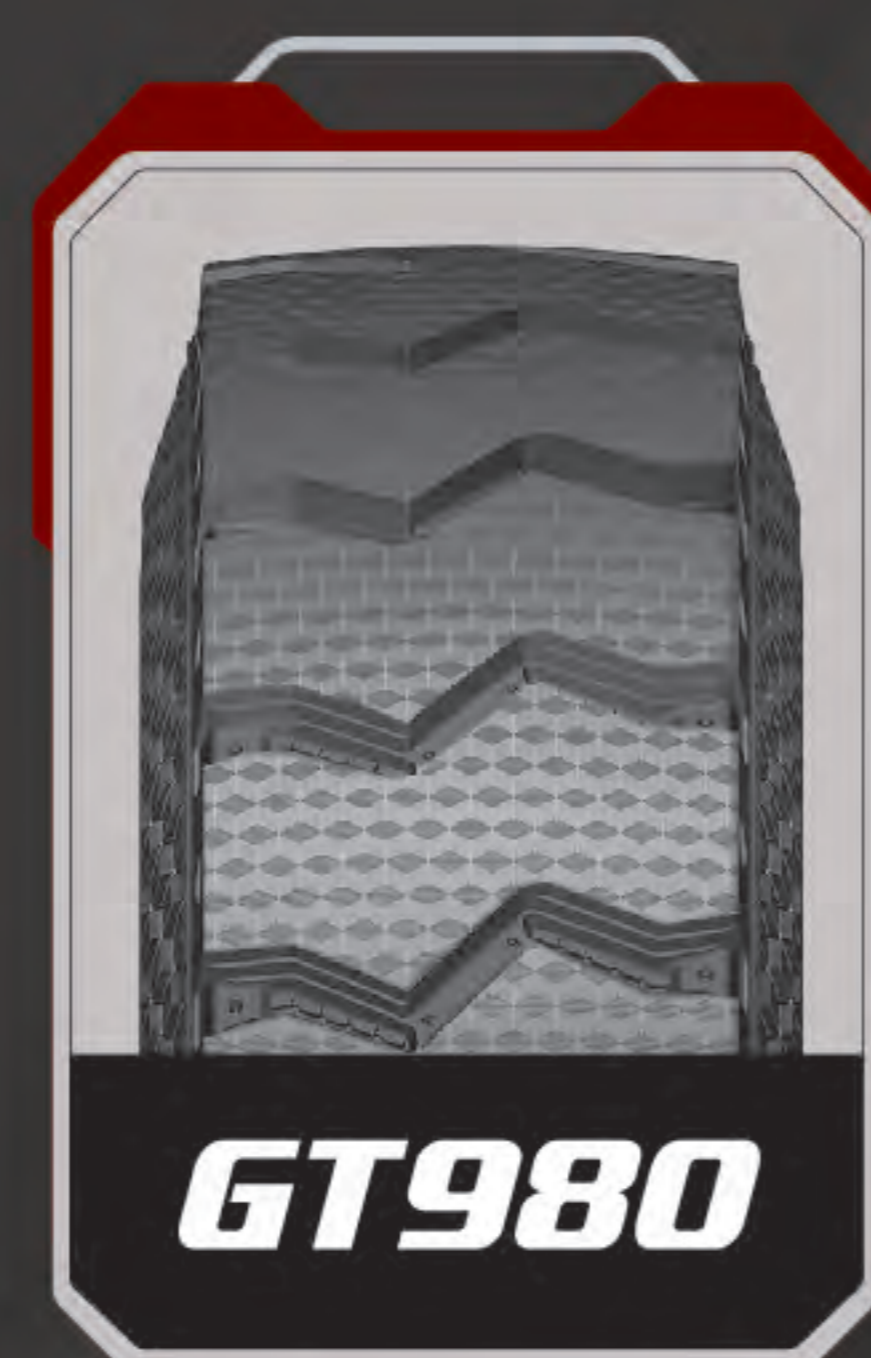
Pattern	PR	Tread Depth (mm)	Load Index / Speed Rating	Standard Rim	Max. Load Single/Double	Inflation Pressure (kPa)	Overall Diameter (mm)	Section Width (mm)	Position
GT168	18	16	152/149 K	8.00	3550 / 3250	930	1079	288	All position
GT228	18	18.5	152/149 K	8.00	3550 / 3250	930	1084	288	All position
GT880	18	25	152/149 G	8.00	3550 / 3250	930	1094	288	All position

## 325/95R24

Pattern	PR	Tread Depth (mm)	Load Index / Speed Rating	Standard Rim	Max. Load Single/Double	Inflation Pressure (kPa)	Overall Diameter (mm)	Section Width (mm)	Position
GT199	22	16.5	162/160 K	9.00	4750 / 4500	850	1228	325	All position
GT776	22	24	162/160 F	9.00	4750 / 4500	850	1228	325	All position

# 12.00R20

# 12.00R24



## 12.00R20

### Technical Information

Pattern	PR	Tread Depth (mm)	Load Index / Speed Rating	Standard Rim	Max. Load Single/Double	Inflation Pressure (kPa)	Overall Diameter (mm)	Section Width (mm)	Position
GT168	20	17	156/153 K	8.50	4000 / 3650	900	1125	315	All position
GT228	20	19.5	156/153 K	8.50	4000 / 3650	900	1125	315	All position
GT208	20	21	156/153 K	8.50	4000 / 3650	900	1125	315	All position
GT880	20	26	152/153 G	8.50	4000 / 3650	900	1136	315	All position
GT930	20	23.5	156/153 D	8.50	4000 / 3650	900	1136	315	All position
GT980	20	24.5	156/153 D	8.50	4000 / 3650	900	1136	315	All position

## 12.00R24

### Technical Information

Pattern	PR	Tread Depth (mm)	Load Index / Speed Rating	Standard Rim	Max. Load Single/Double	Inflation Pressure (kPa)	Overall Diameter (mm)	Section Width (mm)	Position
GT118	18	15.5	158/155 K	8.50	4250 / 3875	830	1226	313	All Position
GT168	20	15.5	160/157 K	8.50	4500 / 4125	900	1226	313	All Position
GT199	22	16.5	160/156 K	8.50	4500 / 4000	850	1226	313	All Position
GT580	20	15	160/157 K	8.50	4500 / 4125	900	1226	313	All Position
GT952	20	15	160/157 K	8.50	4500 / 4125	900	1226	313	All Position
GT266+	20	22	160/157 K	8.50	4500 / 4125	900	1226	313	All Position
GT776	22	24	160/156 F	8.50	4500 / 4000	850	1226	313	All Position